

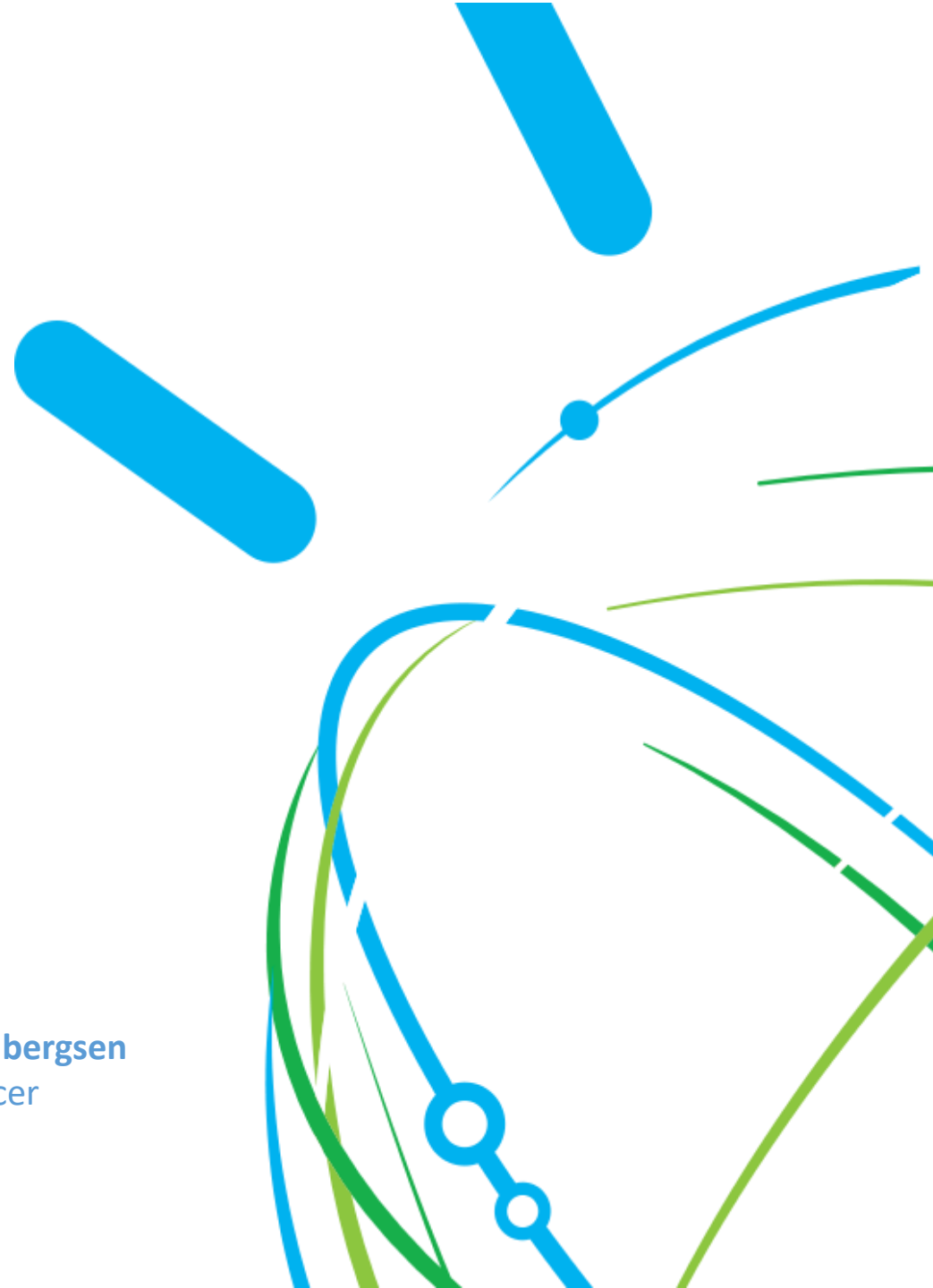
Personalized Healthcare

Considering the Barriers and Opportunities through Infrastructure, IT and Security

Troels Bisgaard Vig
Director, Public Sector
IBM Denmark

Henrik Toft
Transformation Architect
IBM Europe

Henrik Rindel Gudbergensen
Chief Medical Officer
IBM Nordic

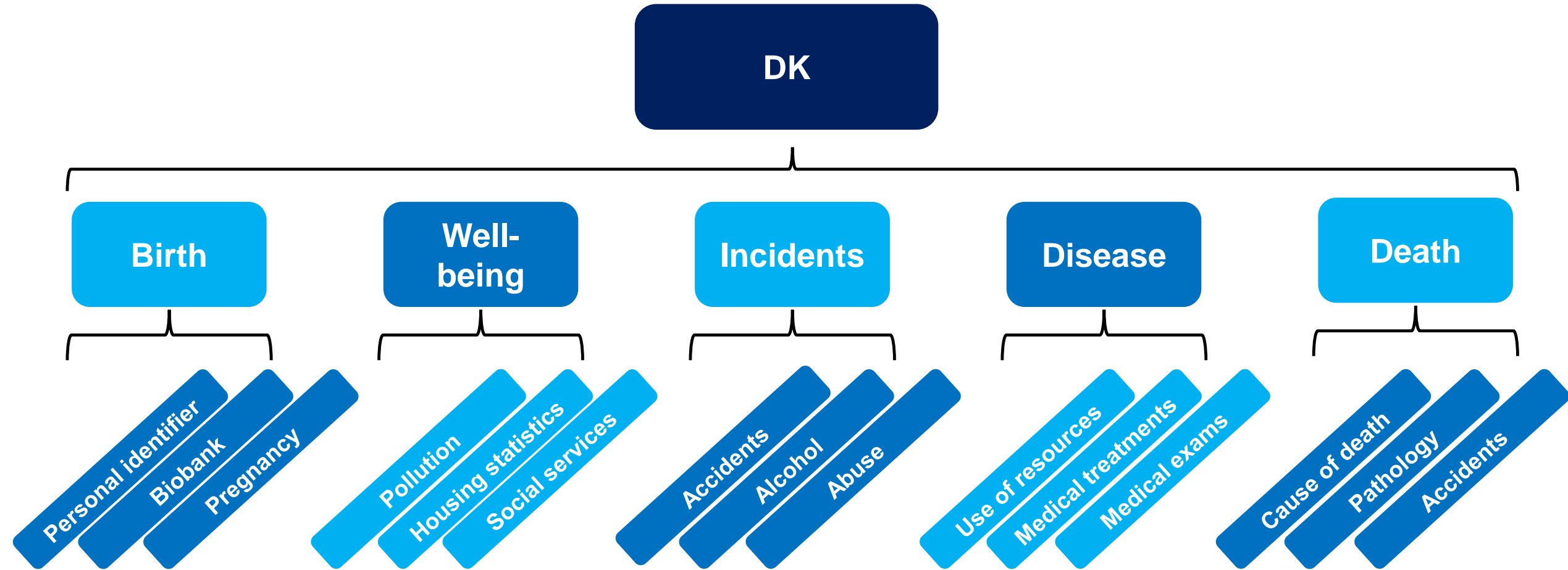


Dilemmas to consider....

- How to create **access** to data for eligible healthcare stakeholders without compromising security?
- How to **control** complex rules and regulations for various types of access to various types of data for various purposes?
- How to enable **collaboration** between stakeholders on the basis of foreign and domestic as well as public and private data while ensuring security, privacy, transparency, and trust?
- Need to **distinguish** between public-based research and commercial based research?

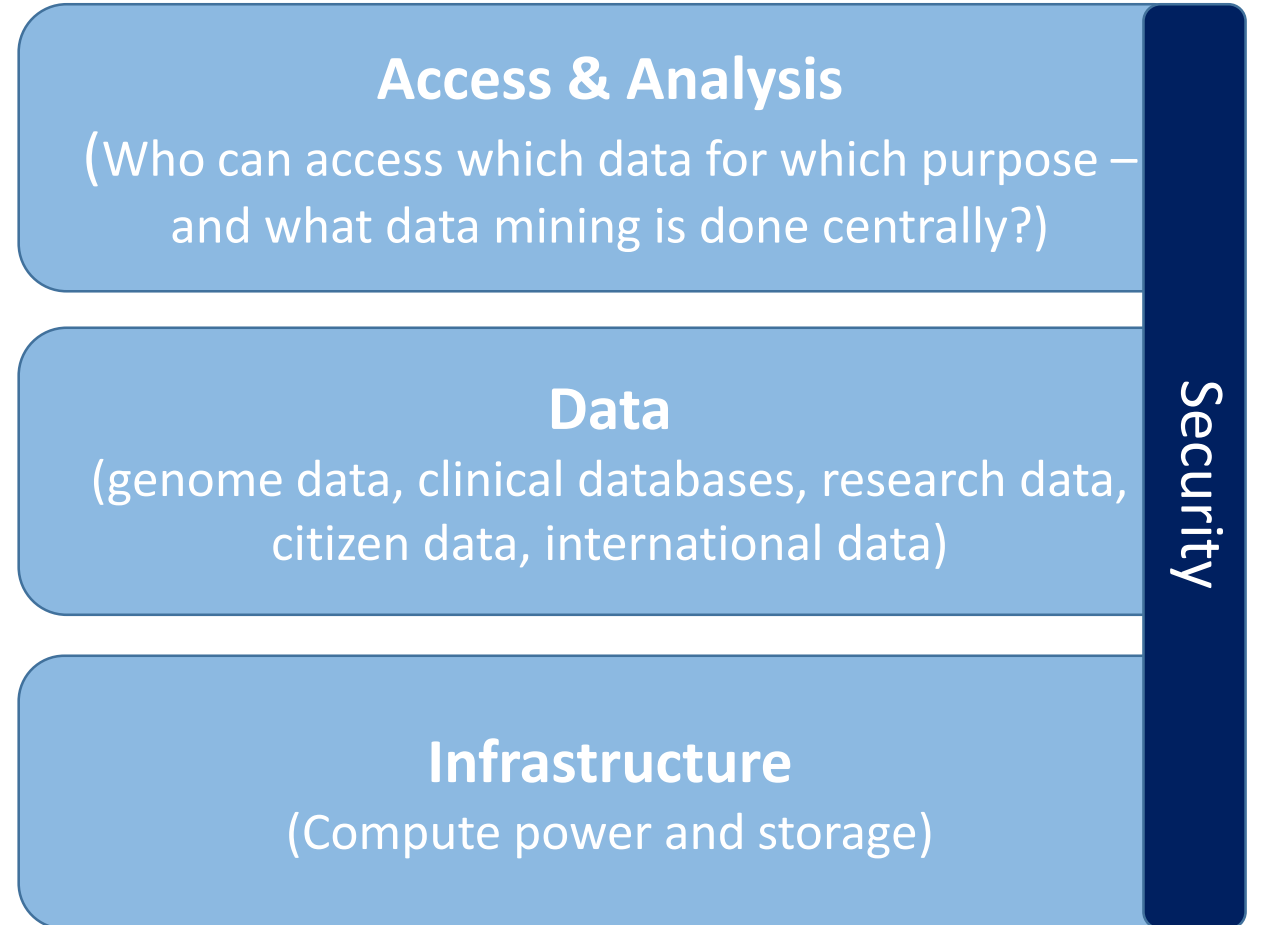


The Danish data 'silos'



Enabling personalised medicine through IT

One (logical not physical)
National
3-layer architecture



Barriers and risks

- Local lack of speed is a large risk in terms of science and investments going to other countries
- Failure at the political top, with the media and the average citizen to understand the complexity across healthcare data, IT and security
- To consolidate data and control across a politically complex environment with different stakeholders and agendas is a challenge.
- Ensure it is attractive for private entities to enter public-private partnerships. Must balance expected investment versus expected outcome.



3 ideas...



- Establish a vision for healthcare data beyond genome data to enable personalised healthcare
- Create a secure, virtual and logical, national data platform enabled by IT
- Identify the first options of combining genome data with other data for improved outcomes